

REVISIONS		
NO.	DATE	DESCRIPTION
1	5/10/07	AV DESIGN CONCEPT
2	6/13/07	REV 2
3	11/10/07	AS-BUILT
Mark Date Description		
COMMISSIONING		
PROJECT NAME		
Drawn By: NCV	Checked By: JDL	

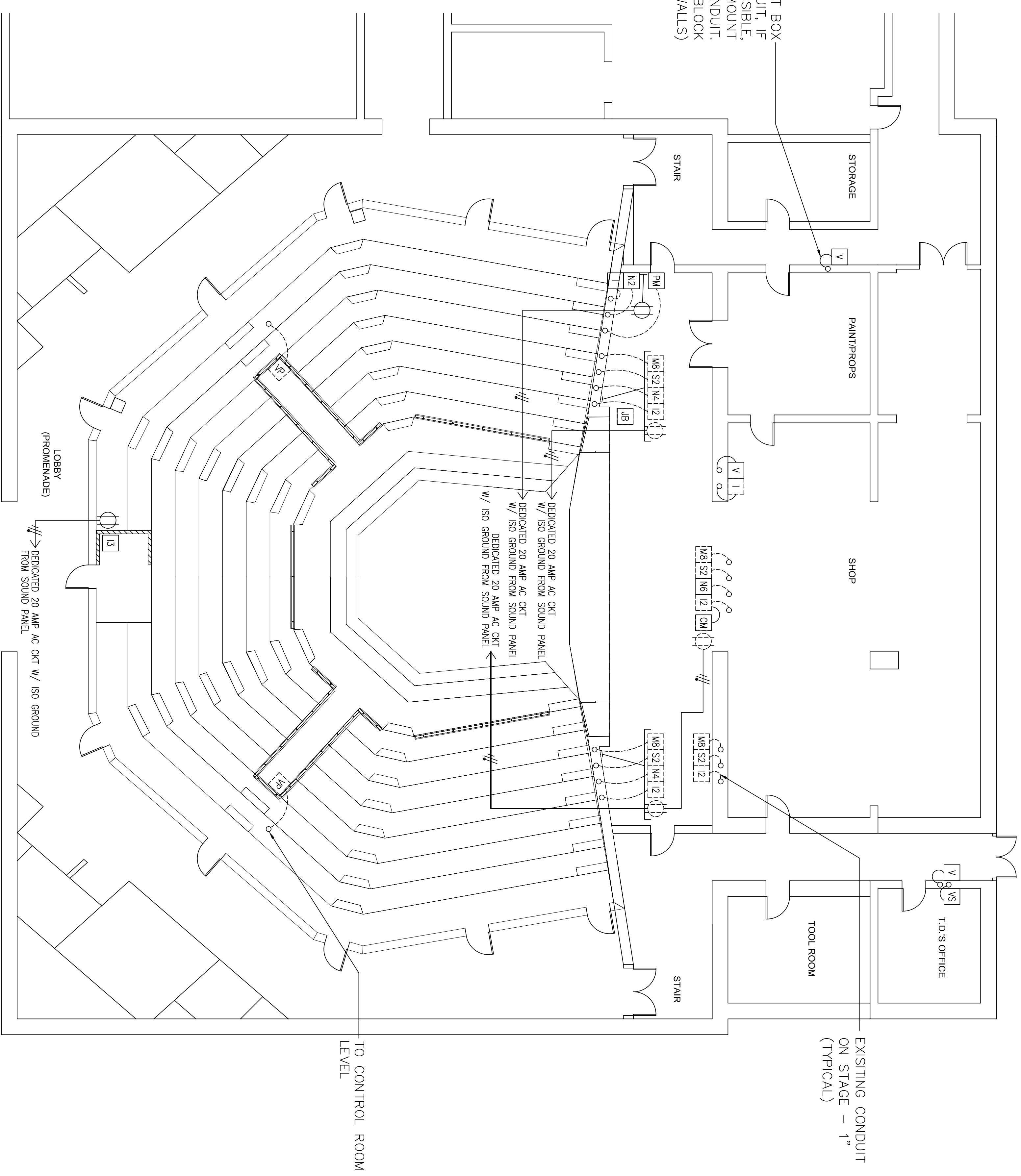
CONDUIT AND AC LAYOUT
1ST FLOOR

AV-3

AV/EQUIPMENT AND CONDUIT SCHEDULE

SYMBOL	DEVICE	ELECTRICAL BOX
[MS]	MAIN RING SPEAKER	-
[SS]	SURROUND SPEAKER	-
[PS]	PLAYBACK SPEAKERS	-
[S]	BACK STAGE CEILING SPEAKER	-
[H]	BACK STAGE HORN SPEAKER	-
[S]	BACK STAGE WALL MOUNT SPEAKER	-
[SV]	SPEAKER WITH BUILT IN VOLUME CONTROL	-
[V]	VOLUME CONTROL	1-GANG
[VS]	VOLUME CONTROL w/ 2-WAY SWITCH	2-GANG
[M]	MONITOR MIC	-
[PM]	PAGE MIC	1-GANG
[S]	LOBBY (PROXENADE) SPEAKER	-
[C]	IR CAMERA	-
[CM]	CAMERA VIDEO MONITOR	-
[T]	TIE LINE PLATE	4-GANG
[M8]	MIC PLATE-8 JACK	4-GANG - EXISTING
[S1]	SPEAKER PLATE-1 JACK	1-GANG - EXISTING
[S2]	SPEAKER PLATE-2 JACK	2-GANG - EXISTING
[N2]	CAT5E (NETWORK) PLATE-2 JACK	1-GANG - EXISTING
[N4]	CAT5E (NETWORK) PLATE-4 JACK	1-GANG
[N6]	CAT5E (NETWORK) PLATE-6 JACK	2-GANG
[I2]	INTERCOM PLATE-4 CHANNEL	2-GANG
[I1]	INTERCOM PLATE	1-GANG
[I3]	INTERCOM REMOTE STATION PLATE	3-GANG
[H]	INTERCOM HEADSET STATION	2-GANG
[VP]	VOM PLATE	2-GANG - EXISTING
[]	EXISTING DEVICE	-
[]	CONDUIT	-
[]	EXISTING CONDUIT	-
[]	CONDUIT STUB UP	-
[]	CONDUIT STUB DOWN	-
[]	AC OUTLET	-
[]	AC OUTLET - EXISTING	-

PROVIDE FLUSH MOUNT BOX AND HIDDEN CONDUIT, IF POSSIBLE. IF NOT POSSIBLE, PROVIDE SURFACE MOUNT (WIREMOLD) BOX AND CONDUIT. (TYPICAL FOR ALL CINDER BLOCK WALLS)



1 FIRST FLOOR - CONDUIT AND AC LAYOUT
AV-3 1/8"=1'-0"