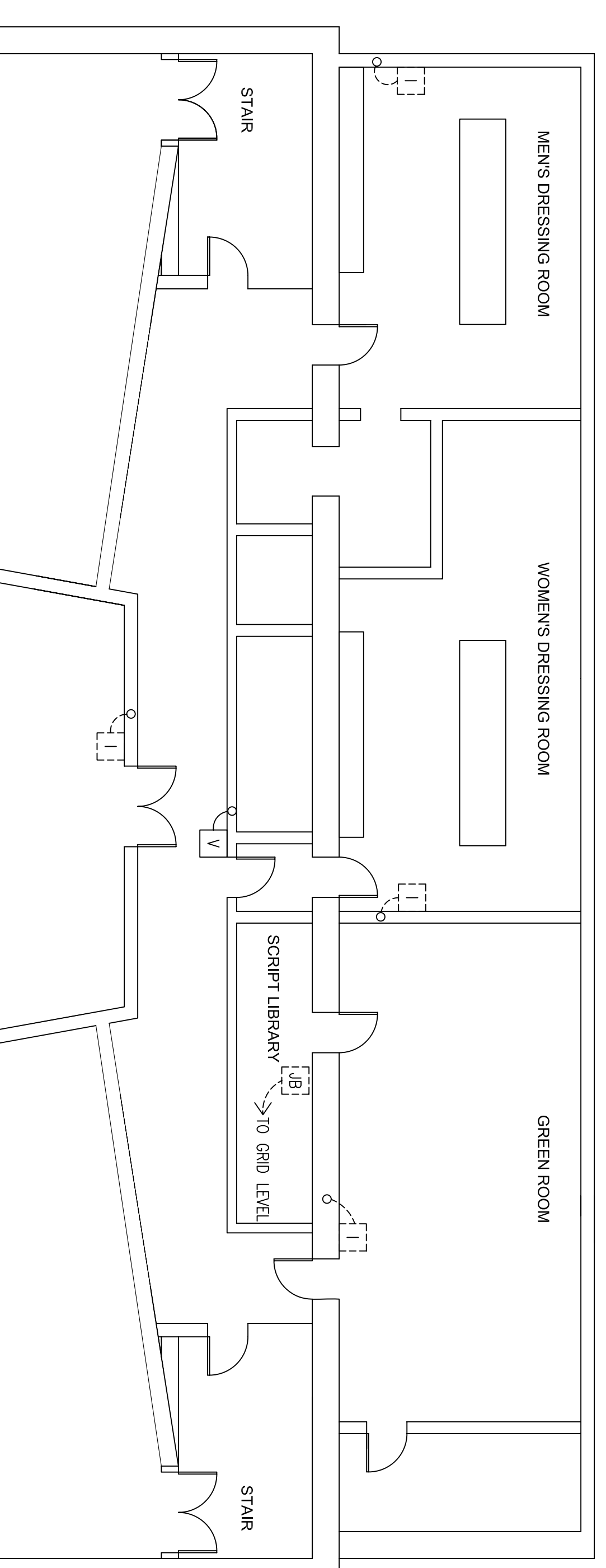


NOTE:
 PROVIDE 1-GANG SURFACE
 (WIREMOLD) BOX AND
 1/2" CONDUIT STUB
 UP TO 6'0" AFF. FOR
 ALL BOXES ON
 CATWALK AND GRID

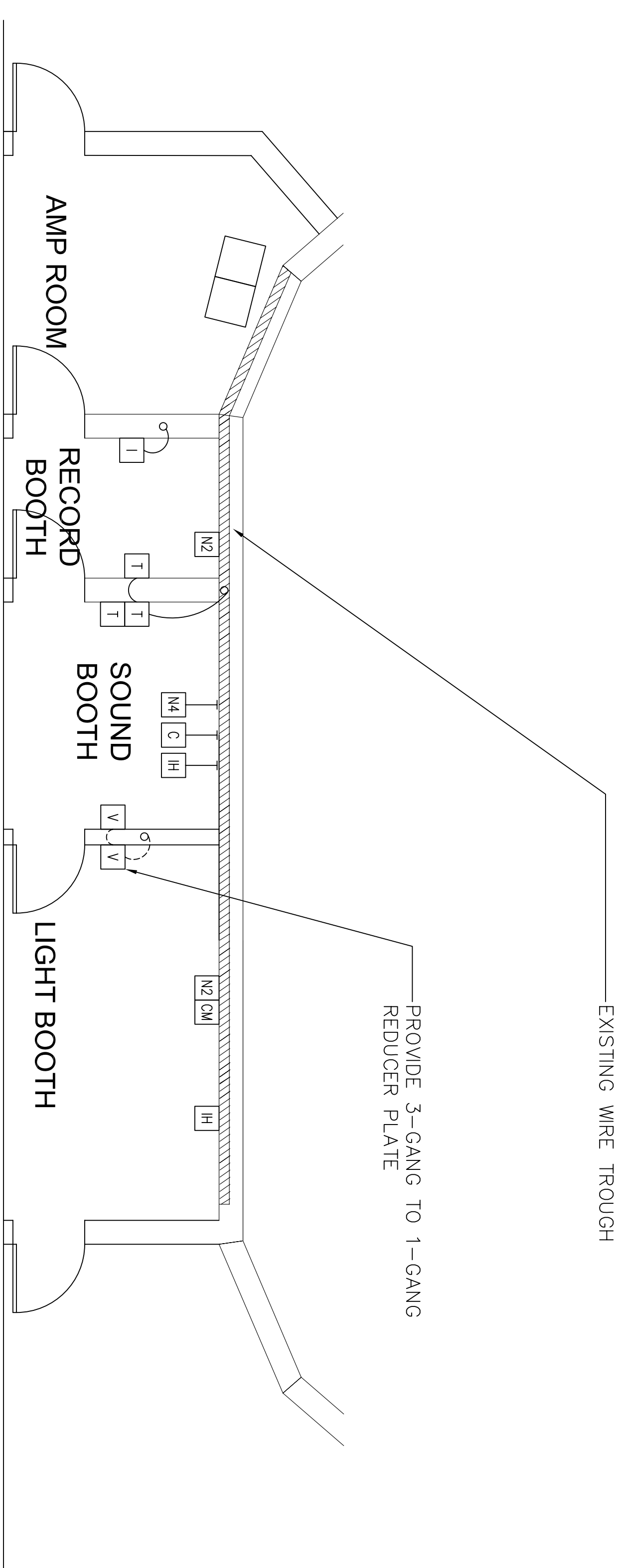
3 CATWALK - CONDUIT AND AC LAYOUT
 1/16"=1'-0"

A/V EQUIPMENT AND CONDUIT SCHEDULE

SYMBOL	DEVICE	ELECTRICAL BOX
MS	MAIN RING SPEAKER	-
SS	SURROUND SPEAKER	-
PS	PLAYBACK SPEAKERS	-
S	BACK STAGE CEILING SPEAKER	-
H	BACK STAGE HORN SPEAKER	-
S	BACK STAGE WALL MOUNT SPEAKER	-
SV	SPEAKER WITH BUILT IN VOLUME CONTROL	-
V	VOLUME CONTROL	1-GANG
VS	VOLUME CONTROL W/ 2-WAY SWITCH	2-GANG
M	MONITOR MIC	-
PM	PAGE MIC	1-GANG
LS	LOBBY (PROMENADE) SPEAKER	-
C	IR CAMERA	-
CM	CAMERA VIDEO MONITOR	-
T	TE LINE PLATE	4-GANG
MR	MIC PLATE-8 JACK	4-GANG - EXISTING
S1	SPEAKER PLATE-1 JACK	1-GANG - EXISTING
S2	SPEAKER PLATE-2 JACK	2-GANG - EXISTING
N2	CATSE (NETWORK) PLATE-2 JACK	1-GANG - EXISTING
N4	CATSE (NETWORK) PLATE-4 JACK	1-GANG
N6	CATSE (NETWORK) PLATE-6 JACK	2-GANG
I2	INTERCOM PLATE-4 CHANNEL	2-GANG
I1	INTERCOM PLATE	1-GANG
I3	INTERCOM REMOTE STATION PLATE	3-GANG
I4	INTERCOM HEADSET STATION	2-GANG
VP	VOM PLATE	2-GANG - EXISTING
ED	EXISTING DEVICE	-
CD	CONDUIT	-
EC	EXISTING CONDUIT	-
CSU	CONDUIT STUB UP	-
CSD	CONDUIT STUB DOWN	-
AO	AC OUTLET	-
AE	AC OUTLET - EXISTING	-



1 LOWER LEVEL - CONDUIT AND AC LAYOUT
 1/8"=1'-0"



2 CONTROL ROOM - CONDUIT AND AC LAYOUT
 1/4"=1'-0"

REVISIONS

NO.	DATE	BY	DESCRIPTION
3	8/10/07	AV DESIGN CONCEPT	
2	6/13/07	REV 2	
1	11/10/07	AS-BUILT	

Mark Date Description

COMMISSIONING

PROJECT NAME

Drawn By: NCV Checked By: JDL

CONDUIT AND AC LAYOUT
 LOWER LEVEL,
 CONTROL ROOM,
 AND CATWALK